

APPENDIX A

MAPS

**NSP Funding Eligible Areas**

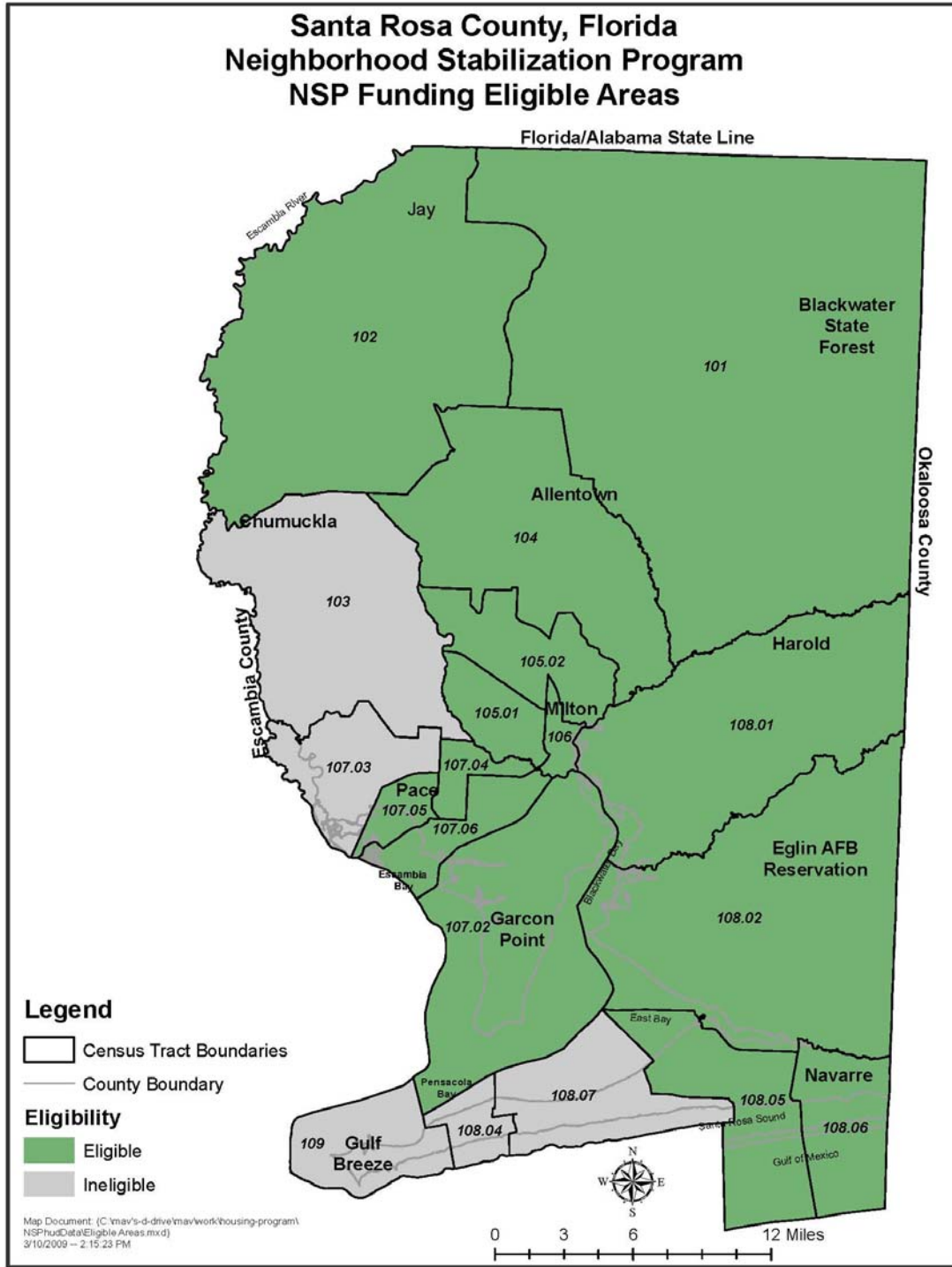
**NSP Census Tract & Foreclosure Risk Score**

**NSP Income Levels**

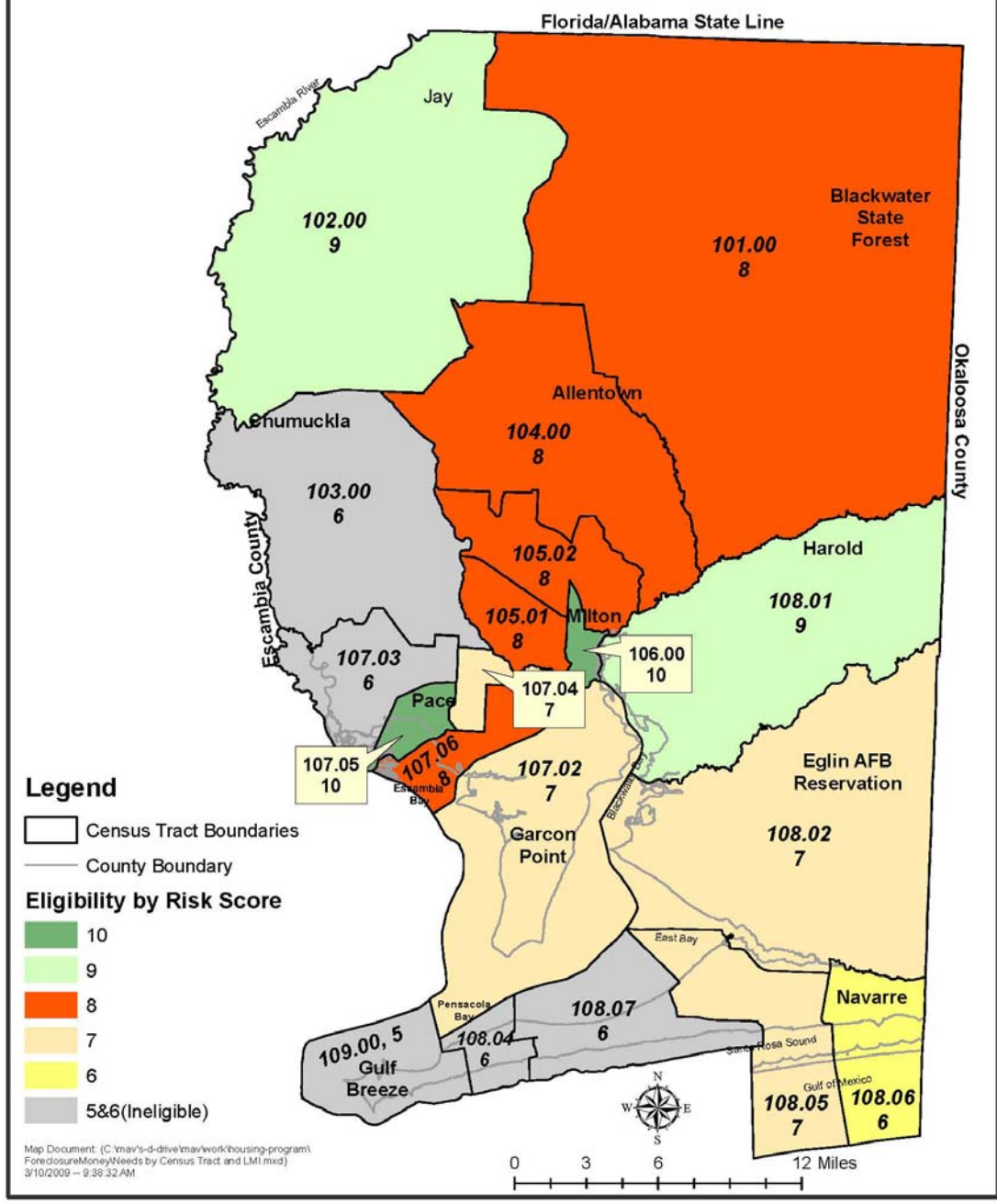
**NSP Predicted 18 Month Foreclosure Problem**

**Flood Plain**

# Santa Rosa County, Florida Neighborhood Stabilization Program NSP Funding Eligible Areas



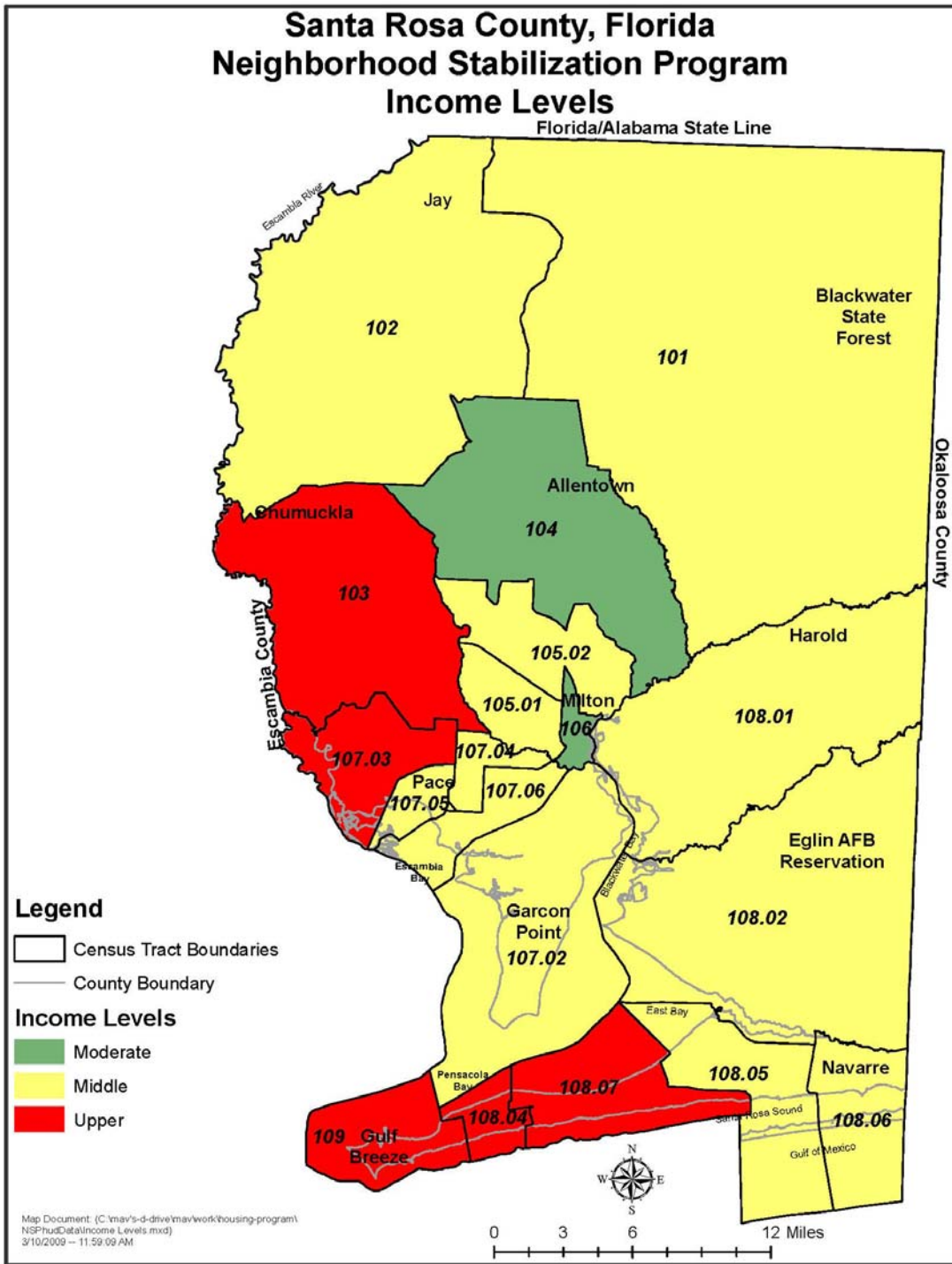
# Santa Rosa County, Florida Neighborhood Stabilization Program Census Tract & Foreclosure Risk Score



Census Tract	Risk Score	Eligibility
Jay	102.00	9
Blackwater State Forest	101.00	8
Allentown	104.00	8
Harold	108.01	9
Milton	105.01	8
Milton	105.02	8
Harold	106.00	10
Pace	107.03	6
Pace	107.04	7
Pace	107.05	10
Pace	107.06	8
Garcon Point	107.02	7
Garcon Point	108.07	6
East Bay	108.02	7
Navarre	108.05	7
Navarre	108.06	6
Gulf Breeze	109.00	5
Gulf Breeze	108.04	6

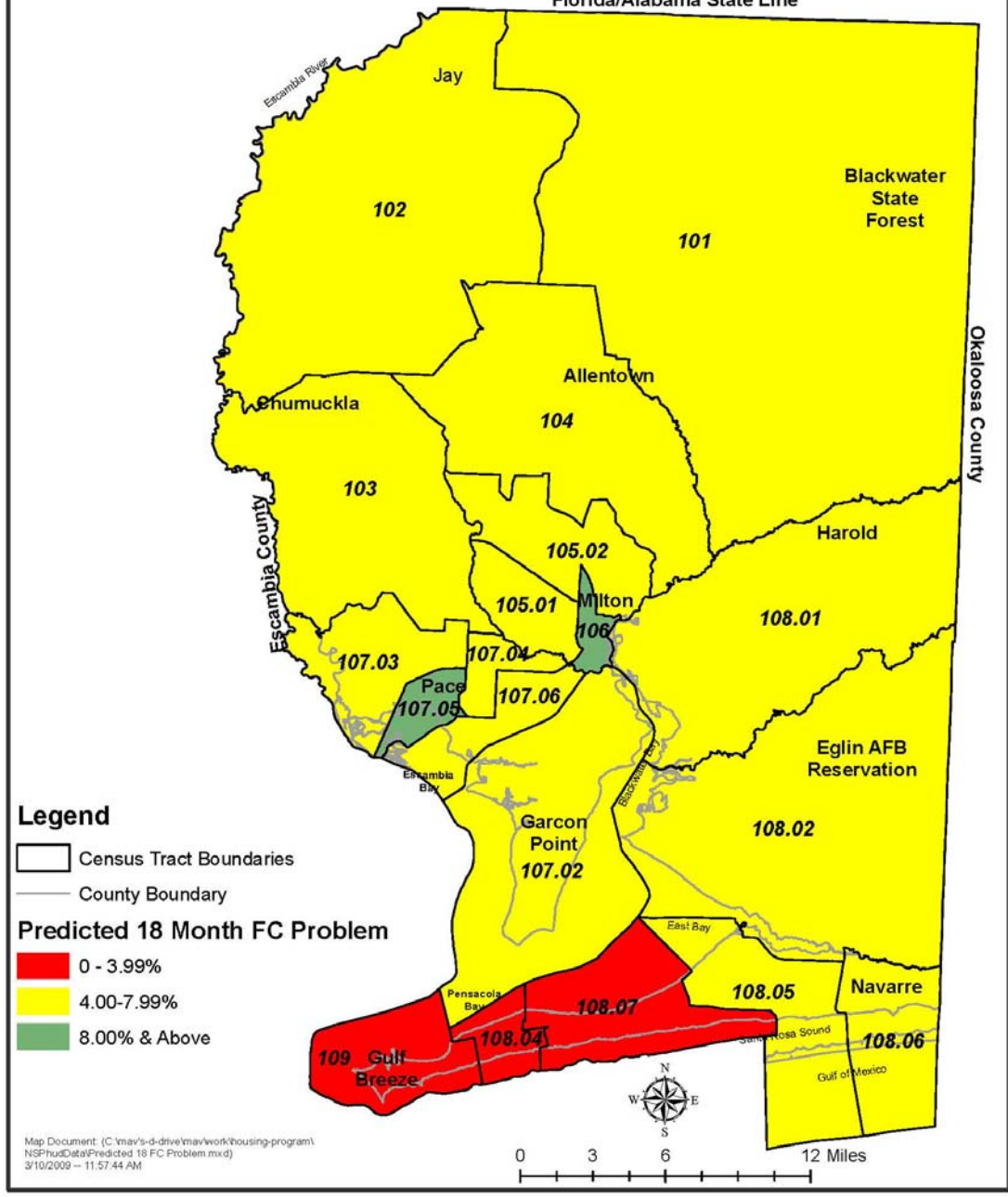
# Santa Rosa County, Florida Neighborhood Stabilization Program Income Levels

Florida/Alabama State Line



# Santa Rosa County, Florida Neighborhood Stabilization Program Predicted 18 Month Foreclosure Problem

Florida/Alabama State Line



# Santa Rosa County, Florida

## Neighborhood Stabilization Program

### NSP Funding Eligible Areas & Special Flood Hazard Area

Florida/Alabama State Line

