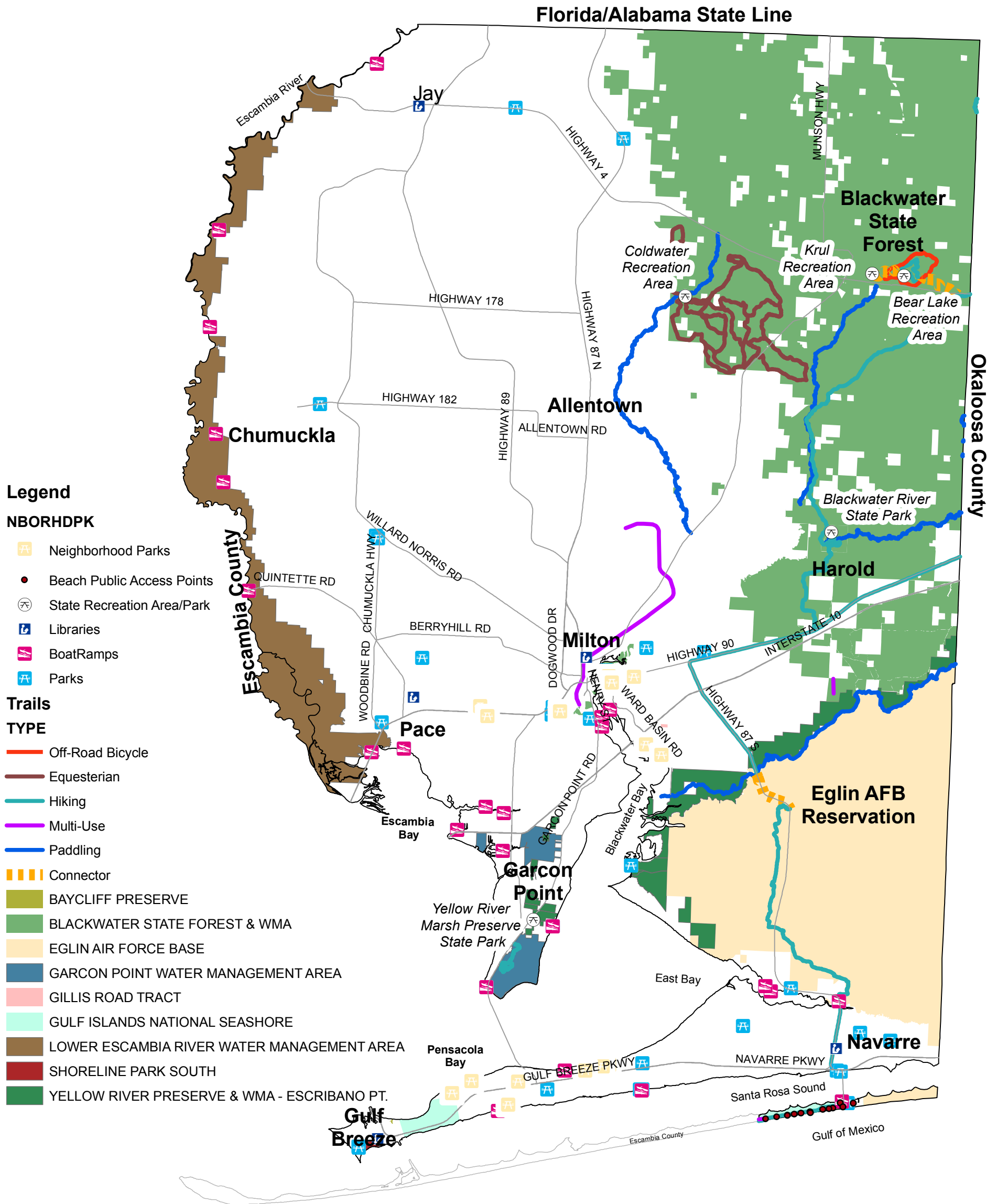


Santa Rosa County

Map 3-9 Public Land and Facilities



Legend

NBORHDPK

- Neighborhood Parks
- Beach Public Access Points
- State Recreation Area/Park
- Libraries
- BoatRamps
- Parks

Trails

TYPE

- Off-Road Bicycle
- Equestrian
- Hiking
- Multi-Use
- Paddling
- Connector

- BAYCLIFF PRESERVE
- BLACKWATER STATE FOREST & WMA
- EGLIN AIR FORCE BASE
- GARCON POINT WATER MANAGEMENT AREA
- GILLIS ROAD TRACT
- GULF ISLANDS NATIONAL SEASHORE
- LOWER ESCAMBIA RIVER WATER MANAGEMENT AREA
- SHORELINE PARK SOUTH
- YELLOW RIVER PRESERVE & WMA - ESCRIBANO PT.

Disclaimer:
 The GIS maps and data distributed by the Santa Rosa County BOCC departments are derived from a variety of public and private sector sources considered to be dependable, but the accuracy, completeness, and currency thereof are not guaranteed. The Santa Rosa County Commission makes no warranties, expressed or implied, as to the accuracy, completeness, currency, reliability, or suitability for any particular purpose of information or data contained in or generated from the County Geographic Database. Additionally, the Santa Rosa Commission or any agent, servant, or employee thereof assume no liability associated with the use of this data, and assume no responsibility to maintain it in any matter or form.

Data Source: FNAI Managed Areas, Florida Trails Network, SRC GIS Geodatabase.

Map Document: (Y:\PlanZone\Draft 2010-2025 Comp Plan\Support Documentation\Maps\mxd\smmap 13-1 Recreational Sites.mxd)
 2/26/2009 -- 2:00:13 PM



Miles



Community Planning, Zoning
 and
 Development Division
 October 30, 2002
 Updated February 26, 2009